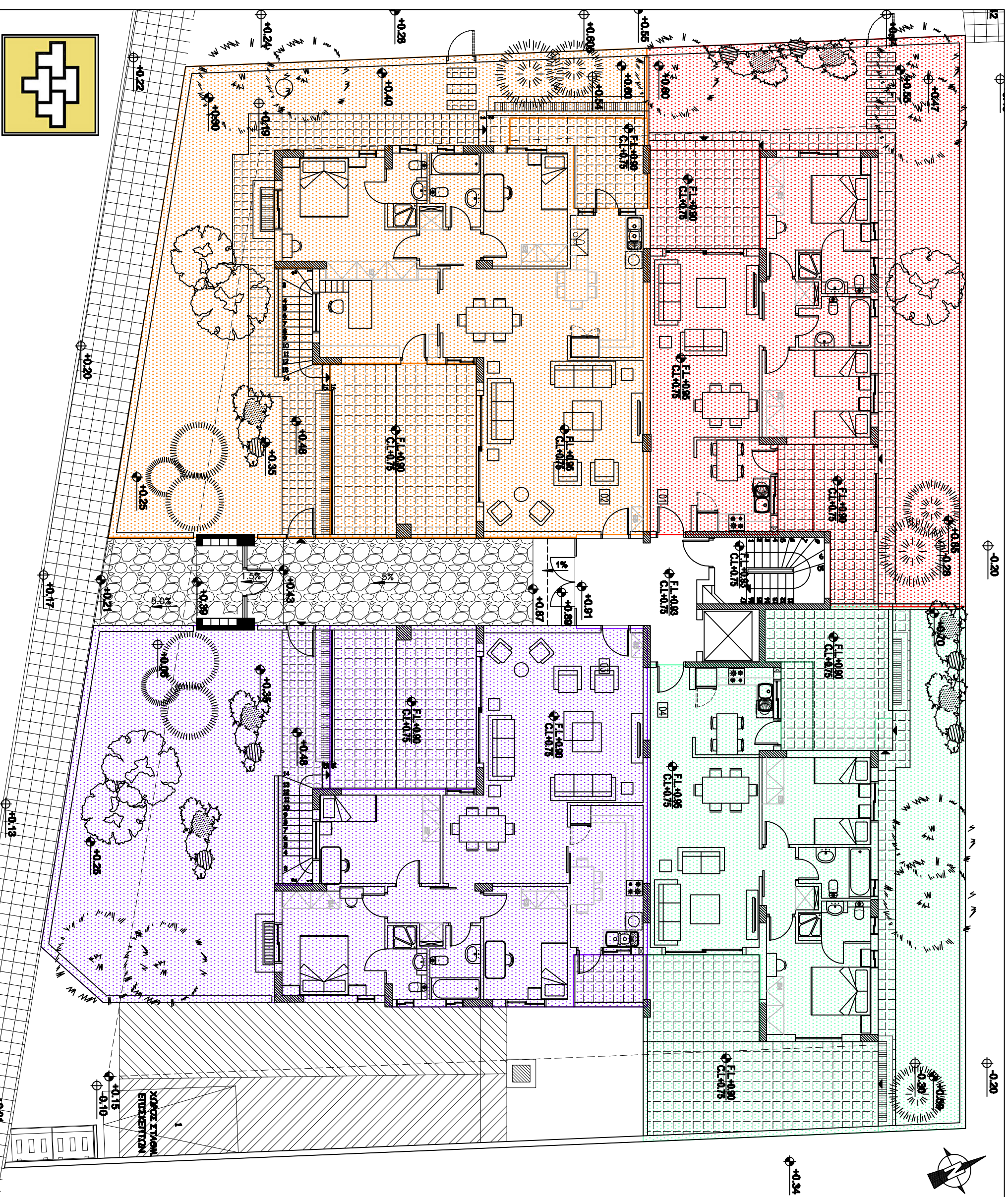


AREA ANALYSIS				
Description	Fldt 01 sq.m.	Fldt 02 sq.m.	Fldt 03 sq.m.	Fldt 04 sq.m.
Internal area	81.38	121.43	120.12	81.83
Internal area (Ypogeo)	-	42.68	35.74	-
Covered verandahs	16.62	22.08	20.11	15.05
Uncovered verandahs	11.03	18.30	17.59	42.80
Garden	88.29	123.32	107.64	52.47
Proportion of common areas	8.82	16.76	15.84	8.72
Total ownership	209.51	344.57	317.04	204.24
Store room	3.37	-	-	3.37
Parking	1	1	2	1
PRICE				



Revision Number	Revision Date	Issued By	Checked By
000	30/09/09	SC	AP

Project: **GHBA**

topos consultants ltd
Chartered · architects · engineers

30 Chytron Str., 1075 Nicosia - Cyprus
T: +357 22300400 F: +357 22300100
e-mail: info@topos.com.cy
website: www.topos.com.cy

Signature: _____

Drawing: **IZOFEIO**

Scale: **NTS** Date: **09/07**

Job No.: **3188** Sheet No.: **SA02**

Filename: **X:\CLIENTS\3188-8HBA\SITE-d31.DWG**
Q:\03-PROJECTS\3188-THIBA\03-SPECIFICATIONS\02-SALES DRAWINGS\pages 4.dwg, 10/11/2011 16:07:59

