



AREA ANALYSIS

Description	House Δ31 sq.m.
Internal area	235.81
Covered verandahs	51.92
Uncovered verandahs	6.97
Roof garden	125.47
Auxiliary rooms(GF+RF)	14.42(GF)+3.70(RF)
Store room	9.78(No6)
Proportion of common areas	23.95
Total ownership	472.02
Parking places	2
PRICE	

Revision Number	Revision Date	Issued By	Checked By
002	09/06/15	MS	—



topos consultants ltd
chartered · architects · engineers

30 Chytron Str., 1075 Nicosia - Cyprus
T: +357 22761155 F: +357 22765590
e-mail: info@topos.com.cy
website: www.topos.com.cy

Signature:

Project:

NAVARINO

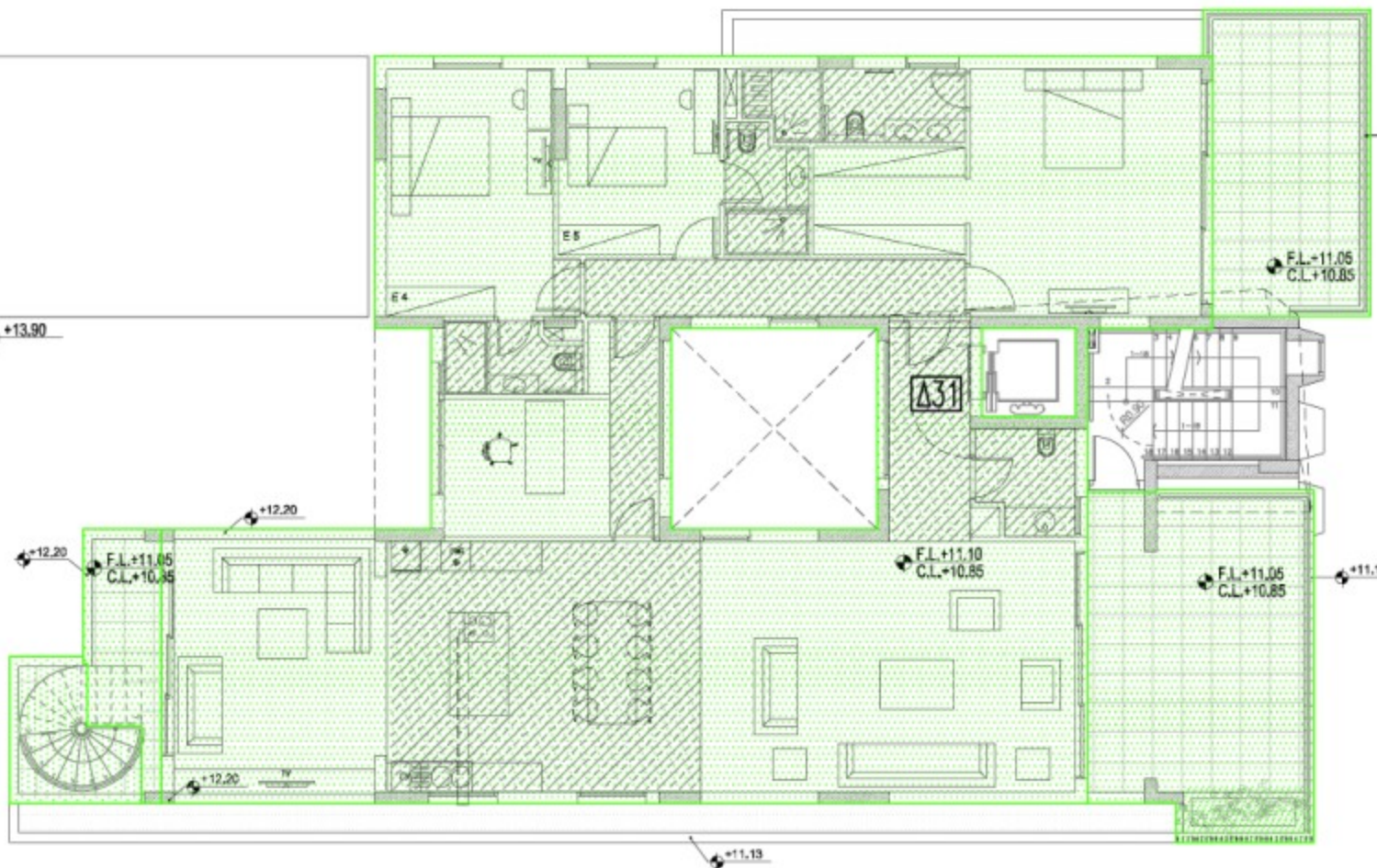
Drawing: **RESIDENTIAL PART
AREA SALES
3rd floor**

Scale: **NTS**

Date: **8/10**

Job No.: **3184**

Sheet No.: **A-R.03**



ΚΑΤΗΓΟΡΙΑ ΕΝΕΡΓΕΙΑΚΗΣ
ΑΠΟΔΟΣΗΣ Β